

SC Connectors

Product Facts

- One-piece connector body:
 - Fastest assembly
 - Field installable
 - Anaerobic epoxy compatible
- Compliant with
 - JIS C-5973
 - Fibre Channel
 - TIA FOCIS-3
- Pre-radiused ferrules
- For 125 μm cladding diameter



Simplex Connector

Duplex Connector



SC 1.6mm to 2.0mm Connector

Performance Characteristics

Insertion Loss — <0.2 dB Typical
Return Loss — <-55 dB Typical
Durability — 200 Cycles

Singlemode SC Connector Kits - Polymer Crimp Body

Ferrule Type	Crimp Body Material	Jacket Size	Simplex / Duplex	Indiv. Pack w/ Strain Relief	Bulk Pack No Strain Relief	Bulk Pack w/ Strain Relief	Crimp Tool	Instruction Sheet
Ceramic	Polymer	3.0 mm	Simplex	5504646-1	5504646-5	5504646-3	503911-1	408-8674
Ceramic	Polymer	3.0 mm	Duplex	5504655-1	5504655-3	5504655-2	503911-1	408-8674
Ceramic	Polymer	900μm	Simplex	5492123-1	5492123-7	5492123-2	n/a	408-8674
Ceramic	Polymer	2.0 mm	Simplex	504934-1 ♦	—	504934-2 ♦	503911-1	408-4208

Performance Characteristics for GR-326 Style Product

Insertion Loss — <0.2 dB Typical
Return Loss — <-59 dB Typical
Durability — 200 Cycles
Tested to GR-326 (Test Report 501-584)
Tunable — 6 positions

GR-326 Style Singlemode SC Connector Kits - Metal Crimp Body

Ferrule Type	Crimp Body Material	Jacket Size	Simplex / Duplex	Indiv. Pack w/ Strain Relief	Bulk Pack w/ Strain Relief	Crimp Tool	Instruction Sheet
Ceramic	Metal	3.0 mm	Simplex	6457215-4	6457215-2	(1) 492131-1 (1) 58532-1	408-8674
Ceramic	Metal	3.0 mm	Duplex	1754599-2	1754599-4	(1) 492131-1 (1) 58532-1	408-8674
Ceramic	Metal	2.4 mm	Simplex	6588714-5	6588714-6	1588176-1	408-8674
Ceramic	Metal	2.4 mm	Duplex	6693776-5	6693776-6	1588176-1	408-8674
Ceramic	Metal	1.6-2.0 mm	Simplex	6588714-2	6588714-4	1588176-1	408-8674
Ceramic	Metal	1.6-2.0 mm	Duplex	6693776-2	6693776-4	1588176-1	408-8674

Performance Characteristics

Insertion Loss — <0.2 dB Typical
Durability — 500 Cycles
TIA 586B Compliant

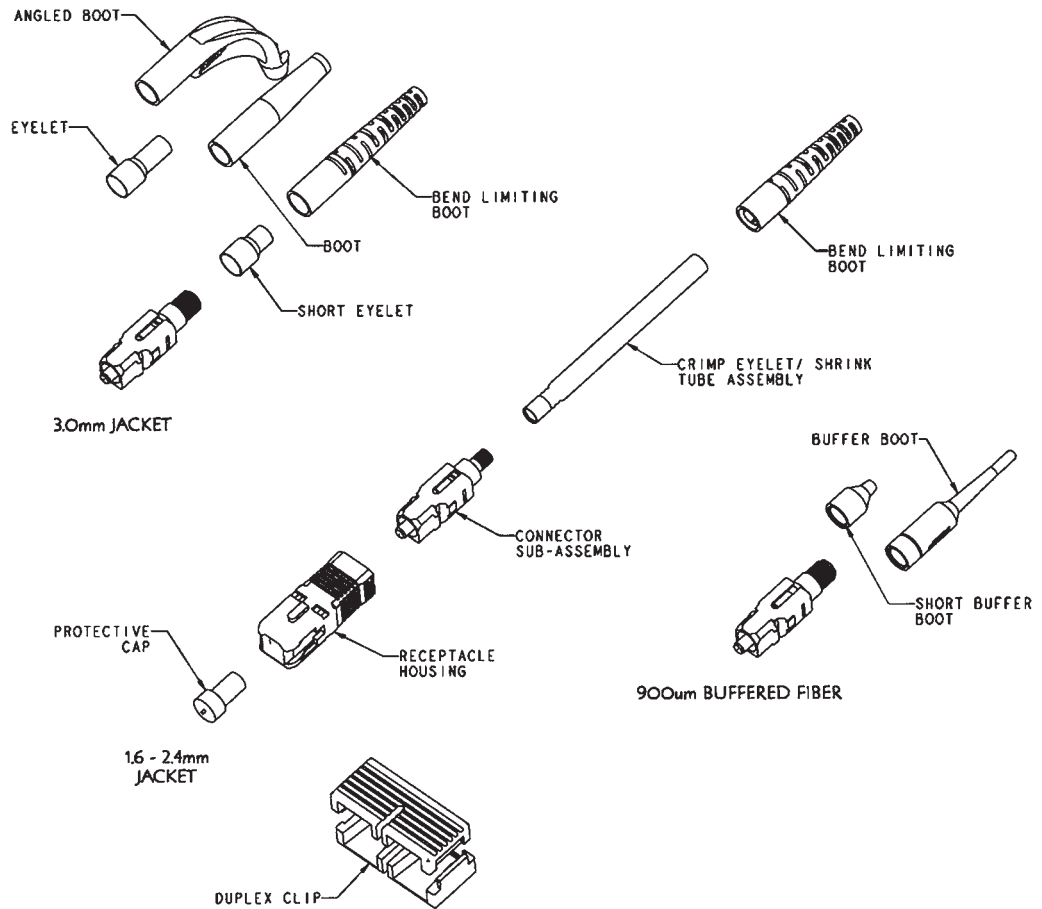
Multimode SC Connector Kits

Ferrule Type	Crimp Body Material	Jacket Size	Simplex / Duplex	Indiv. Pack w/ Strain Relief	Bulk Pack No Strain Relief	Bulk Pack w/ Strain Relief	Crimp Tool	Instruction Sheet
Ceramic	Polymer	3.0 mm	Simplex	5503948-1	5503948-3	5503948-2	503911-1	408-8674
Ceramic	Polymer	3.0 mm	Duplex	5504657-1	5504657-3	5504657-2	503911-1	408-4211
Ceramic	Metal	2.4 mm	Simplex	6588715-3	6588715-4	—	1588176-1	408-8674
Ceramic	Metal	2.4 mm	Duplex	6693775-3	6693775-4	—	1588176-1	408-8674
Ceramic	Metal	1.6-2.0 mm	Simplex	6588715-1	6588715-2	—	1588176-1	408-8674
Ceramic	Metal	1.6-2.0 mm	Duplex	6693775-1	6693775-2	—	1588176-1	408-8674
Ceramic	Polymer	900 μm	Simplex	5504932-1	503948-7	5504932-2	n/a	408-8674

Note: Part Numbers are RoHS compliant except: ♦ Indicates non-RoHS compliant.

SC Connectors (Continued)

SC Connector Components



SC Duplex Clip (Black)
Part Number 1348522-1



SC Connector Component Selection Chart (bulk packaged)

Fiber Type	Simplex Connector Sub-Assembly	Duplex Clip*	Cable Size	Crimp Eyelet w/ Heat Shrink	Crimp Eyelet	Strain Relief Part Number**
Singlemode - GR-326 Style	6588714-3	(2) 6348522-1	1.6-2.0 mm	6374150-1	—	1588153-X
	6457215-5	(2) 6348522-1	2.4 mm	6588189-1	—	1588153-X
Singlemode - Polymer Crimp Body	492123-7	(2) 6348522-1	3.0 mm	—	504973-3	1588491-X
			2.4 mm	—	503970-6	5503971-X
			3.0 mm	—	503970-3	5503971-X
			900 μm	—	—	6457493-X (long) 6278309-X (short)
Multimode - Ceramic Ferrule	6588715-5	(2) 6348522-1	1.6-2.0 mm	6374150-1	—	1588153-X
			2.4 mm	6588189-1	—	1588153-X
			3.0 mm	—	503970-3	5503971-X
	5503948-7	(2) 6348522-1	900 μm	—	—	6457493-X (long) 6278309-X (short)

* For Fibre Channel compliant assemblies, use one (1) piece each of pn 503487-Y and 503488-Y. (Dash refers to color - refer to customer drawing for details).
** Strain relief dash number indicates color - see page 46 for details.

Note: Part Numbers are RoHS compliant except: ♦ Indicates non-RoHS compliant.

SC Connectors (Continued)

SC Strain Reliefs — Jacketed Cable



3.0mm - GR-326 Style



3.0mm Angled



900µm Short



900µm

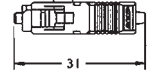
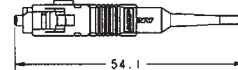
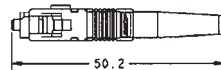
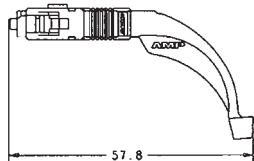
Description	GR-326 Style	Part Number				
		Color				
		Black	Yellow	Red	Beige	Blue
3.0 mm	No	1-5503971-0	5503971-7	1-5503971-1	5503971-1	5503971-2
2.4 mm	No	1-5503971-2	5503971-8	1-5503971-3	5503971-3	5503971-4
3.0 mm	Yes	—	—	—	1588491-5	1588491-2
1.6 mm - 2.4 mm	Yes	1588153-3	1588153-4	—	1588153-5	1588153-2
2.0 mm	No	2-5503971-3	5503971-9	2-5503971-7	5503971-5	5503971-6

SC Strain Reliefs — Angled

Description		Part Number			
		Color			
		Black	Red	Beige	Blue
3.0 mm	Simplex	1278705-3	1278705-4	1278705-2	1278705-1
2.0 mm	Simplex	1374737-3	1374737-4	1374737-2	1374737-1
2.0 mm	45° Simplex	6457543-4	6457543-3	6457543-1	6457543-2

SC Strain Reliefs — 900 micron

Description	Part Number				
	Color				
	Black	Yellow	Red	Beige	Blue
Long (33mm) 900µm	6457493-3	6457493-5	6457493-4	6457493-9	6457493-1
Short (10 mm) 900µm	6278309-1	—	6278309-3	—	6278309-2



SC Low Loss Loopback Connector

Part Number 5503141-1

Product Facts

- 62.5/125 Multimode
- Use for Equipment Testing
- 0.6 dB Insertion Loss
- 0.5" Ferrule Centerline

Part Number 5503141-2

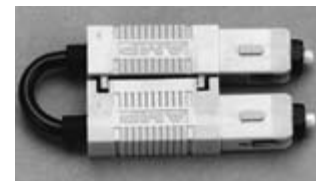
Product Facts

- 50/125 Multimode
- Use for Equipment Testing
- 0.8 dB Insertion Loss
- 0.5" Ferrule Centerline

Part Number 5504883-1

Product Facts

- Singlemode
- Use for Equipment Testing
- 1.5 dB Insertion Loss
- 0.5" Ferrule Centerline



Note: Part Numbers are RoHS compliant except: ♦ Indicates non-RoHS compliant.



“NEW” Tight Jacketed SC Connectors

Product Facts

- Multimode or singlemode
- Simplex or duplex
- Tested using MIL-PRF-85045/16 2.0mm cable

Application

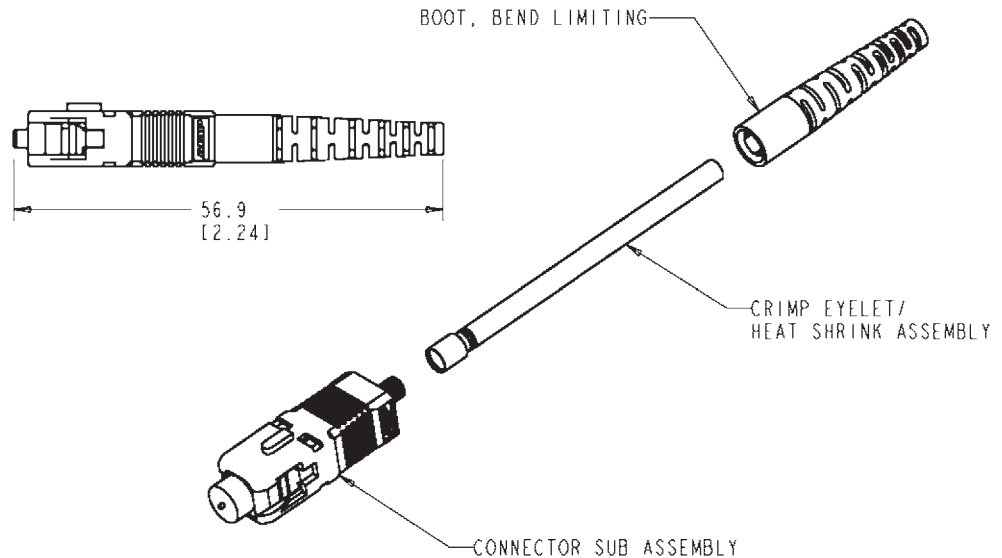
- In Flight Networks
- Shipboard Applications
- Aero Market

SC Connectors (Continued)



The tight jacketed SC Connectors are non pull-proof versions of the standard connectors that are designed for use with tight construction cable. Unlike

standard connectors, this design allows the jacket and buffer to move together, reducing the chances of micro-bends and fiber breakage.



Tight Jacketed SC Connector Kits

Fiber Type	Kit Part Number	Description
Singlemode (blue body & straight boot)	6828100-X	Simplex, 1.6–2.0mm
	1828573-X	Duplex, 1.6–2.0mm
	1918227-1	Simplex, 2.4mm
Multimode (beige body & straight boot)	6828099-X	Simplex, 1.6–2.0mm
	1828574-X	Duplex, 1.6–2.0mm
	1918154-X	Simplex, 2.4mm

Note: X = -1 for individual package, -2 for bulk package.
Instruction Sheet 408-10015

Note: Part Numbers are RoHS compliant except: ♦ Indicates non-RoHS compliant.

SC Connectors (Continued)

SC Adapters

Product Facts

- Suitable for any SC connector
- Available with metal or ceramic alignment sleeves
- Choice of housing materials and colors
- Duplex adapters accept two simplex connectors or one duplex connector
- Assortment of hybrid configurations available
- Mounting screws available
Part Number 503663-1
- Slide-on cover available
- EMI gasketed parts available



SC Simplex Adapter - Plastic



Flangeless SC Simplex Adapter - Plastic



SC Simplex Adapter - Metal



Flangeless SC Simplex Adapter - Metal



SC Duplex Adapter - Plastic

SC Simplex Adapter - Plastic

Alignment Sleeve Material/Application	Housing Color	Part Numbers
Metal/MM only	Beige	5504614-1
Metal	Black	5502632-7
Metal	Blue	5502632-8
Metal	Beige	5502632-9
Metal	Aqua	2-5502632-3
Ceramic	Black	1-5502632-0
Ceramic	Blue	1-5502632-1
Ceramic	Beige	1-5502632-2
"NEW" Ceramic	Aqua	2-5502632-4
Ceramic/APC	Green	1828028-2

Flangeless SC Simplex Adapter - Plastic

Alignment Sleeve Material	Housing Color	Part Numbers
Metal	Black	5504632-1
Ceramic	Black	5504632-2
Metal	Blue	5504632-3
Ceramic	Blue	5504632-4

SC Simplex Adapter - Metal

Alignment Sleeve Material	Housing Color	Part Numbers
Metal	Electroless Nickel	6278348-1
Ceramic	Electroless Nickel	6278348-3

Flangeless SC Simplex Adapter - Metal

Alignment Sleeve Material	Housing Color	Part Numbers
Metal	Electroless Nickel	6278348-5
Ceramic	Electroless Nickel	6278348-7

SC Duplex Adapter - Plastic

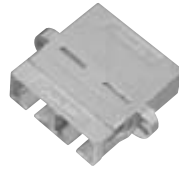
Alignment Sleeve Material/Application	Housing Color	Part Numbers
Metal/MM only	Black	5504640-4
Metal/MM only	Beige	5504640-1
Metal	Black	5502776-7
Metal	Blue	5502776-8
Metal	Beige	5502776-9
"NEW" Metal	Aqua	2-5502776-5
Ceramic	Black	1-5502776-0
Ceramic	Blue	1-5502776-1
Ceramic	Beige	1-5502776-2
"NEW" Ceramic	Aqua	2-5502776-6
Ceramic/APC	Green	2-5502776-3

Note: Part Numbers are RoHS compliant except: ♦ Indicates non-RoHS compliant.



SC Adapters (Continued)

SC Connectors (Continued)



SC Duplex Adapter

SC Duplex Adapter - Metal

Alignment Sleeve Material	Housing Color	Part Numbers
Metal	Electroless Nickel	6278049-1
Ceramic	Electroless Nickel	6278049-3



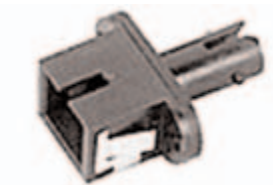
SC Duplex Metal Adapter w/ EMI Shielding

Shielded SC Duplex Adapter - Metal

Alignment Sleeve Material	Housing Color	Part Numbers
Metal	Electroless Nickel	6374223-1
Ceramic	Electroless Nickel	6374223-3

- Designed to help prevent EMI leak
- Ideal for high-speed applications

SC to ST Hybrid Adapters



SC to ST Simplex Adapter - Plastic

SC to ST Simplex Adapter - Plastic

Alignment Sleeve Material	Housing Color	Part Numbers
Metal	Black	5502780-1
Metal	Blue	5502780-2
Metal	Beige	5502780-3
Ceramic	Black	5502780-4
Ceramic	Blue	5502780-5



SC to ST Simplex Adapter - Metal

SC to ST Simplex Adapter - Metal

Alignment Sleeve Material	Housing Color	Part Numbers
Ceramic	Electroless Nickel	6278350-3
Metal	Electroless Nickel	6278350-1

Note: Part Numbers are RoHS compliant except: ♦ Indicates non-RoHS compliant.

SC to ST Hybrid Adapters
(Continued)



Flangeless SC to ST Simplex Adapter - Metal

Flangeless SC to ST Simplex Adapter - Metal

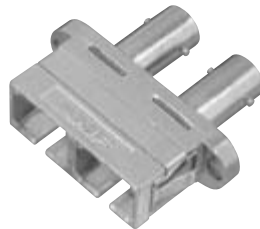
Alignment Sleeve Material	Housing Color	Part Numbers
Ceramic	Electroless Nickel	6278350-7
Metal	Electroless Nickel	6278350-5



SC to ST Duplex Adapter - Plastic

SC to ST Duplex Adapter - Plastic

Alignment Sleeve Material	Housing Color	Part Numbers
Metal (MM Only)	Beige	5504663-4
Metal	Black	5503137-1
Metal	Blue	5503137-2
Metal	Beige	5503137-3
Ceramic	Black	5503137-4
Ceramic	Blue	5503137-5
Ceramic	Beige	5503137-6

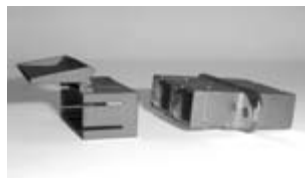


SC to ST Duplex Adapter - Metal

SC to ST Duplex Adapter - Metal

Alignment Sleeve Material	Housing Color	Part Numbers
Metal	Electroless Nickel	6278051-1
Ceramic	Electroless Nickel	6278051-3

Slide-on Retractable Cover for SC Simplex or Duplex Applications



The Tyco Electronics slide-on retractable cover is used for simplex or duplex SC applications. These retractable doors slip onto the end of existing Tyco Electronics adapters and can be mounted after the adapter has already been installed.

- 1693539-1** — Blue Simplex SC
- 1693539-3** — Green Simplex SC
- 1693540-1** — for use on all Tyco Electronics SC Duplex Adapters

Note: Part Numbers are RoHS compliant except: ♦ Indicates non-RoHS compliant.

Product Facts

- Epoxy type connector
- Pre-radiused ferrule finish
- Available in bulk packages

Singlemode Ceramic

Performance Characteristics

- Insertion Loss** — 0.3 dB typical
- Back Reflection** — <-40 dB typical
- Durability** — 200 cycles

ST Connectors — Epoxy Type

Ceramic



Materials

- Ferrule Material** — Ceramic
- Body Material** — Nickel Plated Brass
- Coupling Nut Material** — Plated Die Cast
- Nominal Fiber Size** — 126

Singlemode ST Connector Kits

Ferrule Type	Body Material	Jacket Size*	Strain Relief Type & Color	Indiv. Pack w/ Strain Relief	Bulk Pack w/ Strain Relief	Crimp Tool	Instruction Sheet
Ceramic	Metal	3.0 mm (900µm, 2.4mm)	Bend Limiting/ Yellow	5502579-2	—	58433-4	408-9645
Ceramic	Metal	3.0 mm (900µm, 2.4mm)	Short/Yellow	5502580-2	5502580-4	58433-4	408-9645
Ceramic	Metal	900µm	Bare Buffer/ Yellow	5503613-2	—	58433-4	408-9645

* Jack sizes in parentheses can be accommodated with no additional purchases by using build-up tubing included in the kit part numbers listed.

Multimode Ceramic

Performance Characteristics

- Insertion Loss** — 0.3dB typical
- Durability** — 500 cycles

Ceramic



Multimode ST Connector Kits - Ceramic Ferrule

Ferrule Type	Body Material	Coupling Nut Material	Jacket Size*	Strain Relief Type & Color	Indiv. Pack w/ Strain Relief	Bulk Pack No Strain Relief	Bulk Pack w/ Strain Relief	Crimp Tool	Instruction Sheet
Ceramic	Polymer	Polymer	3.0 mm	Short/Black	—	503569-1	503569-2	58433-4	408-9971
Ceramic	Polymer	Polymer	3.0 mm (900µm, 2.4mm)	Short/Black	503571-1	—	—	58433-4	408-9971
Ceramic	Polymer	Polymer	3.0 mm (900µm, 2.0mm, 2.4mm)	Bare Buffer/Black	5503571-3	—	—	58433-4	408-9971
Ceramic	Polymer	Metal	3.0 mm	Short/Black	503677-2	503676-1	503677-1	58433-4	408-9971
Ceramic	Metal	Metal	3.0 mm (900µm, 2.4mm)	Right Angle/Black	5502674-1	—	—	58433-4	408-9645
Ceramic	Metal	Metal	3.0 mm	Short/Black	—	5492458-3	5492458-2	58433-4	408-9645
Ceramic	Metal	Metal	3.0 mm, 900µm	Bare Buffer/Black Bend Limiting/Black	5492458-1	—	—	58433-4	408-9645
Ceramic	Metal	Metal	3.0 mm (900µm, 2.4mm)	Bare Buffer/Black	5501380-1	—	—	58433-4	408-9645
Ceramic	Metal	Metal	3.0 mm (900µm, 2.4mm)	Short/Black	1-5501380-6	—	—	58433-4	408-9645
Ceramic	Metal	Polymer	3.0 mm	None	—	6374332-2	—	58433-4	408-9645
Ceramic 140µm	Metal	Polymer	3.0 mm	Short/Black	—	—	6374332-1	58433-4	408-9645
Ceramic 140µm	Metal	Metal	3.0 mm (900µm, 2.4mm)	Bend Limiting/Black	5501380-6	—	—	58433-4	408-9645

* Jacket sizes in parentheses can be accommodated with no additional purchases by using build-up tubing included in the kit part numbers listed.

Note: Part Numbers are RoHS compliant except: ♦ Indicates non-RoHS compliant.

ST Connectors — Epoxy Type (Continued)

Polymer Composite

Multimode Polymer Composite

Performance Characteristics

Insertion Loss — 0.3dB Typical
Durability — 500 Cycles

Materials

Ferrule — Composite Polymer
Body — Polymer
Coupling Nut — Polymer



Multimode ST Connector Kits - Polymer Ferrule

Ferrule Type	Body Material	Coupling Nut Material	Jacket Size	Strain Relief Type & Color	Indiv. Pack w/ Strain Relief	Bulk Pack w/ Strain Relief	Crimp Tool	Instruction Sheet
Polymer	Polymer	Polymer	3.0 mm, 900µm	Short/Black Bare Buffer/Black	5503415-1	—	58433-4	408-9971
Polymer	Polymer	Polymer	3.0 mm	Short/Beige	—	503424-3	58433-4	408-9971

Stainless Steel

Multimode Stainless Steel

Performance Characteristics

Insertion Loss — 0.3dB Typical
Operating Temp. Range —
 -30°C to +70°C
Durability — 500 cycles



Multimode ST Connector Kits - Stainless Steel Ferrule

Ferrule Type	Ferrule Designation	Body Material	Coupling Nut Material	Jacket Size	Strain Relief Type & Color	Indiv Pack w/ Strain Relief	Bulk Pack No Strain Relief	Crimp Tool	Instruction Sheet
Stainless Steel	125	Metal	Metal	3.0 mm	Bend Limiting/ Black	5504008-3	5-5504008-4	58551-1	408-4151
Stainless Steel	140	Metal	Metal	3.0 mm	Bend Limiting/ Black	5504008-7	—	58551-1	408-4151
Stainless Steel	231	Metal	Metal	3.0 mm	Bend Limiting/ Black	1-5504008-4	—	58551-1	408-4151
Stainless Steel	240	Metal	Metal	3.0 mm	Bend Limiting/ Black	1-5504008-3	—	58551-1	408-4151
Stainless Steel	125	Metal	Metal	4.3 mm	Long/ Black	5504008-4	—	58551-1	408-4151
Stainless Steel	280	Metal	Metal	3.0 mm	Bend Limiting/ Black	4-5504008-6	—	58551-1	408-4151

Note: Part Numbers are RoHS compliant except: ♦ Indicates non-RoHS compliant.

ST Connectors — Epoxy Type (Continued)

ST Connector Component Selection Chart (Bulk Packaged)

Fiber Type	Connector Sub-Assembly	Cable Size	Crimp Eyelet	Tubing	Strain Relief Part Number*
Singlemode - Ceramic Ferrule Metal Body, Metal Nut	5502578-2	1.6-2.0mm	501971-3	5502275-1	502128-X
		1.6-2.0mm	501971-3	5502275-1	501457-X
		1.6-2.0mm	501971-3	5502275-2	503219-X
		1.6-2.0mm	501971-3	5502275-1	5502667-X
		2.4mm	501971-3	5501275-1	502128-X
		2.4mm	501971-3	5501275-1	501457-X
		2.4mm	501971-3	5501275-1	5502667-X
		3.0mm	501971-3	—	502128-X
		3.0mm	501971-3	—	501457-X
		3.0mm	501971-3	—	5502667-X
Multimode - Ceramic Ferrule Metal Body, Metal Nut	5492458-5	900um	501971-3	502179-7	5503628-X
		1.6-2.0mm	501971-3	5502275-1	502128-X
		1.6-2.0mm	501971-3	5502275-1	501457-X
		1.6-2.0mm	501971-3	5502275-2	503219-X
		1.6-2.0mm	501971-3	5502275-1	5502667-X
		2.4mm	501971-3	5501275-1	502128-X
		2.4mm	501971-3	5501275-1	501457-X
		2.4mm	501971-3	5501275-1	5502667-X
		3.0mm	501971-3	—	502128-X
		3.0mm	501971-3	—	501457-X
Multimode - Ceramic Ferrule Metal Body, Polymer Nut	5501458-8	3.0mm	501971-3	—	5502667-X
		900um	501971-3	502179-7	5503628-X
		1.6-2.0mm	501971-3	5502275-1	502128-X
		1.6-2.0mm	501971-3	5502275-1	501457-X
		1.6-2.0mm	501971-3	5502275-2	503219-X
		1.6-2.0mm	501971-3	5502275-1	5502667-X
		2.4mm	501971-3	5501275-1	502128-X
		2.4mm	501971-3	5501275-1	501457-X
		2.4mm	501971-3	5501275-1	5502667-X
		3.0mm	501971-3	—	502128-X
Multimode - Ceramic Ferrule Polymer Body, Metal Nut	503676-5	3.0mm	501971-3	—	501457-X
		3.0mm	501971-3	—	5502667-X
		900um	501971-3	502179-7	5503628-X
		1.6-2.0mm	501971-3	5502275-1	502128-X
		1.6-2.0mm	501971-3	5502275-1	501457-X
		1.6-2.0mm	501971-3	5502275-2	503219-X
		1.6-2.0mm	501971-3	5502275-1	5502667-X
		2.4mm	501971-3	5501275-1	502128-X
		2.4mm	501971-3	5501275-1	501457-X
		2.4mm	501971-3	5501275-1	5502667-X
Multimode - Ceramic Ferrule Polymer Body, Polymer Nut	503676-4	3.0mm	501971-3	—	502128-X
		3.0mm	501971-3	—	501457-X
		3.0mm	501971-3	—	5502667-X
		900um	501971-3	502179-7	5503628-X
		1.6-2.0mm	501971-3	5502275-1	502128-X
		1.6-2.0mm	501971-3	5502275-1	501457-X
		1.6-2.0mm	501971-3	5502275-2	503219-X
		1.6-2.0mm	501971-3	5502275-1	5502667-X
		2.4mm	501971-3	5501275-1	502128-X
		2.4mm	501971-3	5501275-1	501457-X

* Strain relief dash number indicates color - see chart on page 54 for details.

Note: Part Numbers are RoHS compliant except: ♦ Indicates non-RoHS compliant.

ST Connectors — Epoxy Type (Continued)



Bend Limiting



Short



Right Angle



Bare Buffer

Strain Relief Bulk packages (100 pcs./package)

Color	Bend Limiting	Short (3.0mm)	Right Angle	Bare Buffer	Short (2.0mm)
Black	502128-1	501457-1	5502667-1	5503628-2	503219-1
Red	502128-3	501457-3	5502667-4	2-5503628-4	—
Blue	502128-7	501457-5	5502667-2	5503628-9	503219-5
Beige	502128-4	502457-4	5502667-3	2-5503628-9	503219-4

Product Facts

- Free-hanging or panel mount design

ST Coupling Receptacles



Alignment Sleeve Material	Packaging	Part Number
Polymer Composite Multimode	Single	501381-1
	Bulk (1000)	501381-2
Metal Multimode	Single	504021-1
	Bulk (50)	504021-2
Zirconia Ceramic Singlemode	Single	502750-1
	Bulk (50)	502750-2

ST Polymer Duplex Receptacle



Alignment Sleeve Material	Color	Part Number
Metal/MM Only	Beige	504662-2
Metal/MM Only	Lt. Almond	504662-1

ST Active Device Mounts — Multimode

Product Facts

- Designed to accept multimode TO-18, TO-46 and TO-52 active devices
- Nickel plated, die cast zinc
- Mount to PCB or through panel
- Includes positioning ring



Description	Packaging	Height	Part Number
Standard height	Single	.410	5501474-1
Low profile	Single	.280	5502585-2
Low profile	Single (100)	.314	5504022-2
Low profile	Bulk (50)	.314	5504022-3

Note: Part Numbers are RoHS compliant except: ♦ Indicates non-RoHS compliant.

Product Facts

- One-piece connector body:
 - Fastest assembly
- Compliant with:
 - JIS C-5970
- Pre-radiused ferrule

Singlemode FC Connector Kits - Polymer Crimp Body

Performance Characteristics

Insertion Loss — <0.2 dB Typical

Return Loss — <-59 dB Typical

Durability — 200 Cycles

GR-326 Style FC Connector Kits - Metal Crimp Body Singlemode

Performance Characteristics

Insertion Loss — <0.2 dB Typical

Return Loss — <-59 dB Typical

Tested to GR-326

Tuning — 6 position

FC Connectors



Singlemode FC Connector Kits - Polymer Crimp Body

Ferrule Type	Crimp Body Material	Jacket Size	Indiv. Pack w/Strain Relief	Bulk Pack w/Strain Relief	Crimp Tool	Instruction Sheet
Ceramic	Polymer	3.0 mm	5504649-1	5504649-8	503911-1	408-8674
Ceramic	Polymer	900µm	5492052-1	5492052-4	n/a	408-8674

GR-326 Style Singlemode FC Connector Kits - Metal Crimp Body

Ferrule Type	Crimp Body Material	Jacket Size	Indiv. Pack w/Strain Relief	Bulk Pack w/Strain Relief	Crimp Tool	Instruction Sheet
Ceramic	Metal	3.0 mm	6457216-4	6457216-2	(1) 492131-1 (1) 58532-1	408-8674
Ceramic	Metal	2.4 mm	6754264-5	6754264-6	1588176-1	408-8674
Ceramic	Metal	1.6 - 2.0 mm	6754264-4	6754264-7	1588176-1	408-8674
Ceramic	Metal	900µm	6754264-2	—	1588176-1	408-8674

FC Strain Reliefs — Jacketed Cable

Description	GR-326 Style	Part Number				
		Color				
		Black	Yellow	Red	Beige	Blue
3.0 mm	No	1-5503971-0	5503971-7	1-5503971-1	5503971-1	5503971-2
2.4 mm	No	1-5503971-2	5503971-8	1-5503971-3	5503971-3	5503971-4
3.0 mm	Yes	—	—	—	1588491-5	1588491-2
1.6 mm - 2.4 mm	Yes	1588153-3	1588153-4	—	1588153-5	1588153-2
2.0 mm	No	2-5503971-3	5503971-9	2-5503971-7	5503971-5	5503971-6

FC Strain Reliefs — Angled

Description		Part Number			
		Color			
		Black	Red	Beige	Blue
3.0 mm	Simplex	1278705-3	1278705-4	1278705-2	1278705-1
2.0 mm	Simplex	1374737-3	1374737-4	1374737-2	1374737-1
2.0 mm	45° Simplex	6457543-4	6457543-3	6457543-1	6457543-2

FC Strain Reliefs — 900 micron

Description	Part Number				
	Color				
	Black	Yellow	Red	Beige	Blue
Long (33mm) 900µm	6457493-3	6457493-5	6457493-4	6457493-9	6457493-1
Short (10 mm) 900 µm	6278309-1	—	6278309-3	—	6278309-2

Note: Part Numbers are RoHS compliant except: ♦ Indicates non-RoHS compliant.



3.0mm - GR-326 Style



3.0mm Angled



900µm Short



900µm

FC Connectors (Continued)

FC Connector Component Selection Chart (bulk packaged)

Fiber Type	Simplex Connector Sub-Assembly	Cable Size	Crimp Eyelet w/ Heat Shrink	Crimp Eyelet	Strain Relief Part Number*
Singlemode - GR-326 Style	6754264-8	1.6-2.0 mm	6374150-1	—	1588153-X
		2.4 mm	6588189-1	—	1588153-X
	6457216-5	3.0 mm	—	504973-3	1588491-X
Singlemode Polymer Crimp Body	5504649-9	2.4 mm	—	503970-6	5503971-X
		3.0 mm	—	503970-3	5503971-X
	900 μm	—	—	6457493-X (long) 6278309-X (short)	
Multimode - Ceramic Ferrule	6374778-2	1.6-2.0 mm	6374150-1	—	1588153-X
		2.4 mm	6588189-1	—	1588153-X
	5504922-3	3.0 mm	—	503970-3	5503971-2
		900 μm	—	—	6457493-9 (long) 6278309-1 (short)

* Strain relief dash number indicates color - see page 55 for details.

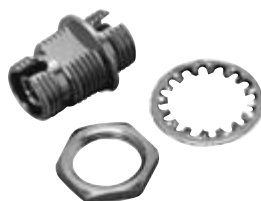
FC Adapters



FC Square Flange Adapter

FC Simplex Square Flange Adapter - Metal

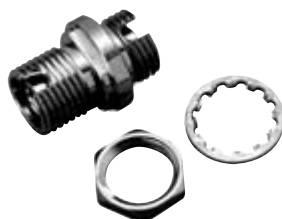
Alignment Sleeve Material	Panel Cut-out	Keyway Slot (Nom.)	Part Numbers
Metal	Square Flange	Std. 2.33 mm	5501506-2
		Std. 2.33 mm	5501506-1



FC 8mm/9mm Dia. Round

FC Simplex 8mm/9mm Dia. Round (D-Hole) Adapter - Metal

Alignment Sleeve Material	Panel Cut-out	Keyway Slot (Nom.)	Part Numbers
Metal (Copper)	D-Hole	Std. 2.33 mm	5504407-1
		Std. 2.33 mm	5504407-3
Ceramic/APC	D-Hole	2.05 mm Type R	5504407-8
Ceramic/APC	D-Hole	Prec. 2.02 mm	5504407-7



FC 8mm Dia. Round (Double D)

FC Simplex 8mm Dia. Round (Double D-Hole) Adapter - Metal

Alignment Sleeve Material	Panel Cut-out	Keyway Slot (Nom.)	Part Numbers
Metal	Double D-Hole	Std. 2.33mm	5504013-1

Note: Part Numbers are RoHS compliant except: ♦ Indicates non-RoHS compliant.



Hybrid Adapters - SC/FC/ST



FC to ST Simplex Adapter - Metal

Hybrid FC to ST Simplex Adapter - Metal

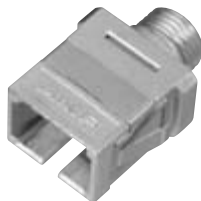
Alignment Sleeve Material	Housing Color	Part Numbers
Metal	Electroless Nickel	5503640-1
Ceramic	Electroless Nickel	5503640-2



SC to FC Simplex Adapter - Metal

SC to FC Simplex Adapter - Metal

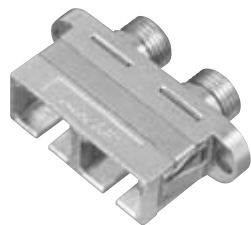
Alignment Sleeve Material	Housing Color	Part Numbers
Metal	Electroless Nickel	6278349-1
Ceramic	Electroless Nickel	6278349-3



Flangeless SC to FC Simplex Adapter - Metal

Flangeless Simplex Adapter - Metal

Alignment Sleeve Material	Housing Color	Part Numbers
Metal	Electroless Nickel	6278349-5
Ceramic	Electroless Nickel	6278349-7



SC to FC Duplex Adapter - Metal

SC to FC Duplex Adapter - Metal

Alignment Sleeve Material	Housing Color	Part Numbers
Metal	Electroless Nickel	6278050-1
Ceramic	Electroless Nickel	6278050-3

Note: Part Numbers are RoHS compliant except: ♦ Indicates non-RoHS compliant.